

sex, any age, produce of cow, owned by exhibitor
Grand Champion Female of All Breeds - Rosette

BOOK 49 - COUNTY MARKET CLASS Steers & Heifers

(Will be judged before all other beef classes)
Owned and shown by county exhibitor only (exceptions FFA and 4-H club members of Coshocton County school districts).

CLASSES

- 1.MS1 - \$15 - 14 - 13 - 12 - 11
- 2.MS2 - \$15 - 14 - 13 - 12 - 11
- 3.MS3 - \$15 - 14 - 13 - 12 - 11
- 4.MS4 - \$15 - 14 - 13 - 12 - 11

BOOK 49A - OPEN FEEDER CALF CLASS (Open to All)

- (Judged following county market class)
1. All Feeder Calves will be weighed following the Jr. Fair weigh-in Saturday morning.
 2. All Feeder Calves must be treated at least 21 days before the start of the fair as follows: Vaccinated for IBR and P13; vaccinated for BVD; vaccinated for seven-way Clostridia; treated for internal parasites with Eprinex.
 3. Junior Fair exhibitors bringing more than one animal will house their open class animals together in the open class barn.

CLASSES

- | CLASSES | PREMIUMS |
|---------|--------------------------|
| 1.FC1 | \$15 - 14 - 13 - 12 - 11 |
| 2.FC2 | \$15 - 14 - 13 - 12 - 11 |
| 3.FC3 | \$15 - 14 - 13 - 12 - 11 |
| 4.FC4 | \$15 - 14 - 13 - 12 - 11 |
| 5.FC5 | \$15 - 14 - 13 - 12 - 11 |

**FIFTH DEPARTMENT
DAIRY**

Keith Pepper - Superintendent
Kim Wells - Asst. Superintendant

JUDGING: Tuesday, October 4, 2011 - 9:30 a.m.

- Entry Fee - \$4.00
Entry closes at 5 p.m. Saturday, September 17.
Only county residents may show non-registered animals. In order to show in a group class animal must have been entered in single class. In classes for Get of Sire and Produce of Dam animals need not be owned by exhibitors.

Every female over 24 months old must have produced a calf or prove to be with calf.

- BOOK 50 - JERSEY
- BOOK 51 - GUERNSEY
- BOOK 52 - HOLSTEIN

- BOOK 53 - AYRSHIRE
- BOOK 54 - BROWN SWISS
- BOOK 55 - MILKING SHORTHORN

DAIRY CATTLE CLASSES

(All of these classes apply to each of the books above.)

PREMIUMS - \$25 - 18 - 15 - 12 - 10 - 8

1. Junior Heifer Calf, born between March 1 - June 1, 2011
2. Intermediate Heifer Calf, born between Dec. 1, 2008 - Feb. 28, 2011
3. Senior Heifer Calf, born between Sept. 1 - Nov. 30, 2010
4. Summer Yearling Heifer, born June 1 - Aug. 31, 2010
5. Junior Yearling Heifer, born March 1 - May 31, 2010
6. Intermediate Senior Yearling Heifer, born Dec. 1, 2008 - Feb. 28, 2010
7. Senior Yearling Heifer (not in milk) born Sept. 1-Nov. 30, 2009(senior yearling heifers freshened show in 2 year old class)
8. Junior Champion Female - Ribbon

PREMIUMS - \$40 - 30 - 20 - 14 - 9 - 7

9. Junior Two Year Old Cow, born March 1-Aug. 31, 2009
10. Senior Two Year Old Cow, born Sept. 1, 2005-Feb. 28, 2009
11. Three Year Old Cow, born Sept. 1, 2006-Aug. 31, 2008
12. Four Year Old Cow, born Sept. 1, 2005-Aug. 31, 2007
13. Aged Cow -Five years & Over, born before Sept. 1, 2006
14. Dry Cow - Any Age (Any single dry cow shown in class 10 - 13 cannot be shown again as a dry cow.)
15. Senior Champion - Ribbon
16. Grand Champion - Ribbon

PREMIUMS - \$25 - 15 - 10 - 8

17. Get of Sire-Group to consist of three animals either sex, all are the get of one cow.
18. Dam and Daughter
19. Produce of Dam-Group to consist of two animals either sex, all are the produce of one cow.
20. Three Best Females - bred and owned by exhibitor

**SIXTH DEPARTMENT
SHEEP**

Wayne Young - Superintendent

JUDGING: Monday, October 3, 2011 - 9 a.m.

- Entry Fee: \$3.00
(See the rules and regulations for exhibitors of livestock)
Entries close 5 p.m. Saturday, September 17.
A maximum of two entries per class per exhibitor.
A breeder's young flock shall consist of one ram any age, two yearling ewes, and two ewe lambs owned and bred by exhibitor.
A pen shall consist of two ewes and two ram lambs bred by exhibitor and weaned within the year shown.
Yearlings, one year old and under two, and lambs under one year.
All entries in open class sheep breeding classes are to be



**THE PERFECT MATCH
OF PERFORMANCE,
RELIABILITY ... AND VALUE!**

New Holland tractors and hay and forage equipment are one big, productive family. And now with the Family Value\$ program, New Holland innovation is an exceptional value. With Family Value\$ you'll enjoy big savings when you purchase a New Holland tractor within 36 months of buying a qualifying New Holland haytool. Visit us today about Family Value\$ and the perfect match of productive equipment.



CNH Capital
LEASING | FINANCING | CREDIT CARE | INSURANCE

Bakersville Garage, Inc.

Box 13 St. St. 751 • Bakersville, Ohio

Jerry Lower & Tim Specht - Office 330-897-7561

Hours: Monday-Friday 8-5:30; Saturday 8-5

www.bakersvillegarage.com

registered, with the exception of BOOK 77 MARKET BREEDING SHEEP.

Book 77 MARKET BREEDING SHEEP are any purebred, or commercial crossbred sheep that is bred for the sole purpose of producing show market lambs. Market Breeding Sheep should be shown slick sheared with butt wool optional. Entries in BOOK 77 are limited to Coshocton County residents only.

BOOK 60 - COUNTY MARKET CLASS (Single Lamb)
To be shown before Open Class Sheep Classes

CLASSES	PREMIUMS
1. Light Weight Class	\$15 - 14 - 13 - 12 - 11 - 10 - 9 - 8
2. Heavy Weight Class	\$15 - 14 - 13 - 12 - 11 - 10 - 9 - 8
Champion Overall Plate - sponsored by Albert Young Family	
Reserve Champion - Lamb Halter sponsored by Wayne Young	

OPEN CLASS BREEDS

BOOK 61 -MERINO	BOOK 71 -HAMPSHIRE
BOOK 62 -SOUTHDOWN	BOOK 72 -SUFFOLK
BOOK 63 -SHROPSHIRE	BOOK 73 -COLUMBIA
BOOK 64 -POLLED DORSET	BOOK 74 -TUNIS
BOOK 65 -HORNED DORSET	BOOK 75 - ALL OTHER
BOOK 66 -MONTADALE	LONGWOOL BREEDS
BOOK 67 -RAMBOUILLET	BOOK 76 -NATURAL
BOOK 68 -CHEVIOT	COLORED BREEDS
BOOK 69 - CORRIEDALES	BOOK 77 - MARKET
BOOK 70 - OXFORD	BREEDING SHEEP

(All of the classes apply to each of the books above. Each breed shall be judged separately.)

PREMIUMS: \$18-15-12-10-9-8

CLASSES

1. Yearling Ram	6. Ewe Lamb
2. Ram Lamb	7. Pair of Ewe Lambs
3. Pair of ram lambs	8. Pen of Lambs
4. Yearling Ewes	9. Breeder's Flock
5. Pair of Yearling Ewes	

CHAMPION

- 10. Best Male, any age - \$5.00 And Ribbon
- 11. Best Female, any age - \$5.00 And Ribbon

BOOK 78 - SUPREME CHAMPION EWE SHOW-\$25.00
BOOK 79 - SUPREME CHAMPION RAM SHOW-\$25.00

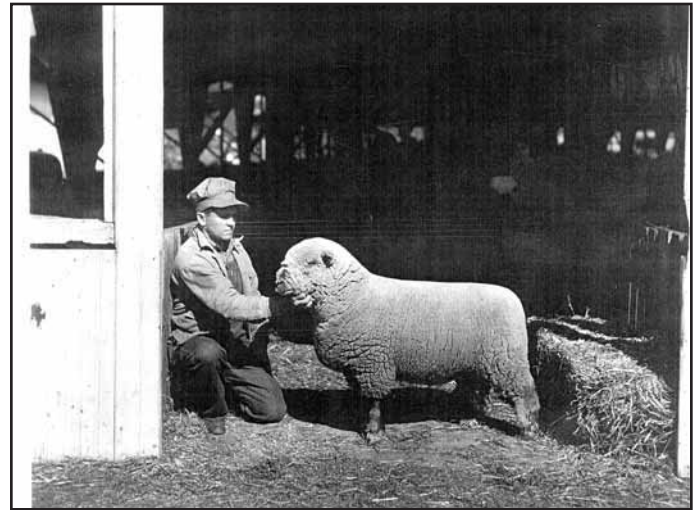
**SEVENTH DEPARTMENT
SWINE**

Rod Lindsey - Superintendent
JUDGING: Wednesday, October 5, 2011 - 6:30 PM
Hunter Arena

- Entry Fee - \$5.00
Premiums: \$15 - 12 - 10 - 8 - 5
Entries close 5 p.m. Saturday, September 17.

BOOK 99 - COUNTY MARKET HOG BARROW

CLASSES	PREMIUMS
1. Light Weight	\$15-\$12-\$10-\$8-\$5
2. Medium Weight	\$15-\$12-\$10-\$8-\$5
3. Heavy Weight	\$15-\$12-\$10-\$8-\$5
4. Grand Champion Barrow	
5. Reserve Grand Champion Barrow	



COSHOCTON COUNTY FAIR. YEAR IS UNKNOWN.

BOOK 100 - COUNTY MARKET HOG GILT

CLASSES	PREMIUMS
1. Light Weight	\$15-\$12-\$10-\$8-\$5
2. Medium Weight	\$15-\$12-\$10-\$8-\$5
3. Heavy Weight	\$15-\$12-\$10-\$8-\$5
4. Grand Champion Gilt	
5. Reserve Grand Champion Gilt	

BOOK 101 - SHOWMANSHIP

Small Fry 8 & under Trophy

Swine shown in this department must be owned and shown by county exhibitors only. (Exceptions made for FFA and 4-H Club Members of a Coshocton County School District.)

**ELEVENTH DEPARTMENT
EDUCATION**

Robert Buxton - Superintendent

SCHOOL DISPLAY

All work displayed by only state accredited schools of Coshocton County, must be completed since the preceding county fair. Premiums to be paid by check from the County School Office to each individual school.

Exhibitors must arrange their own work under the direction of the county school office. A Rosette will be awarded to Best Overall High School, Jr. High, and Elementary School Display.

